



|    |        |
|----|--------|
| MX | MEXICO |
|----|--------|

# Diagram / Parts List

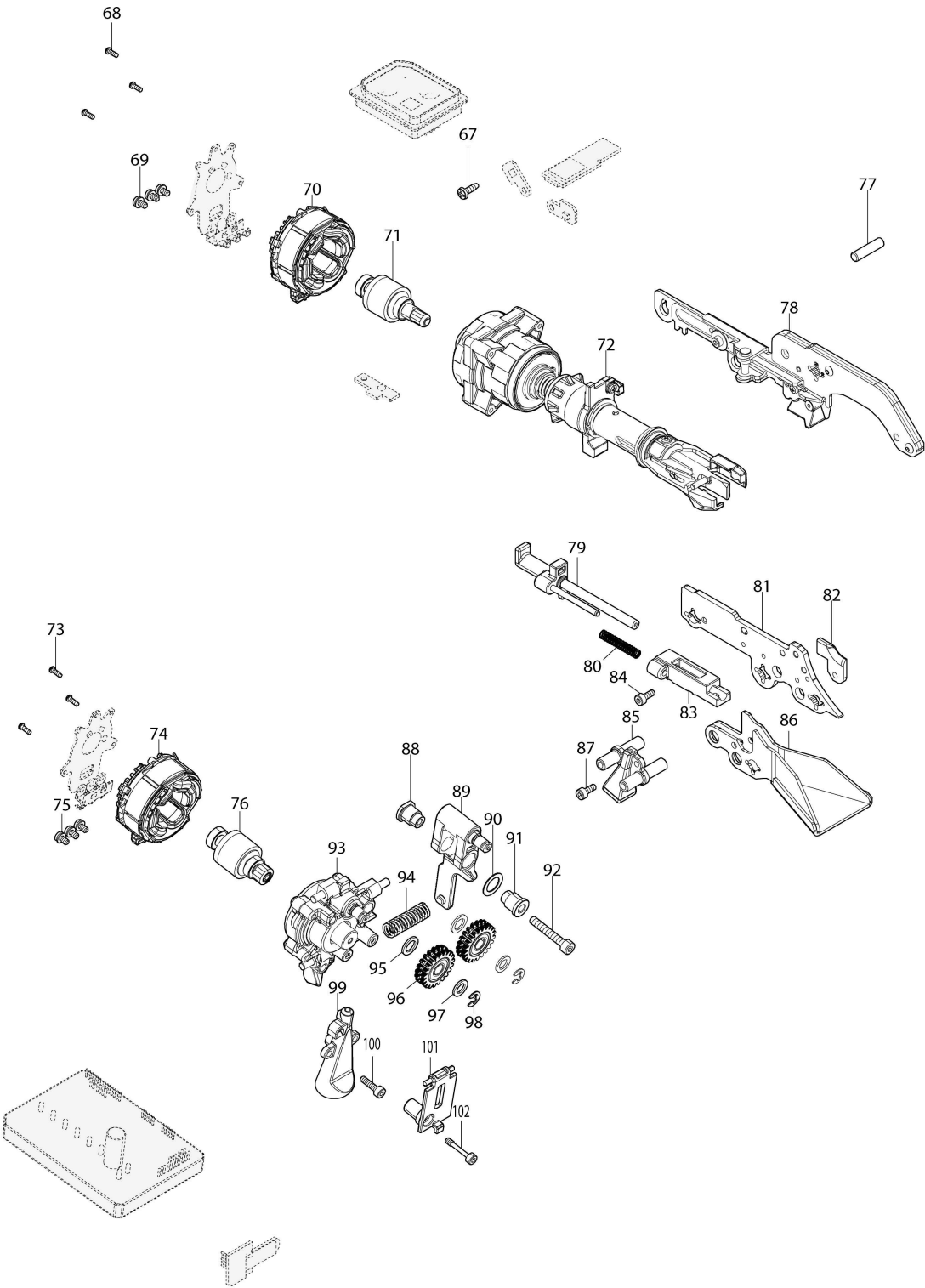
**TR001G**

**Cordless Rebar Tying Tool**



[illegible]

(MX) TR001G / Cordless Rebar Tying Tool



**TR001G / Cordless Rebar Tying Tool**

| Item            | Sub | Parts No. | Parts Description               | Qty   | I/C | E/C No. | Close No. | Remark |
|-----------------|-----|-----------|---------------------------------|---|-----|---------|-----------|--------|
| 001             |     | 262054-7  | Urethane ring 3                 | 1   |     |         |           |        |
| 002             |     | 256A96-7  | Grooved pin 4B                  | 1   |     |         |           |        |
| 003             |     | 268238-5  | Pin 5                           | 1   |     |         |           |        |
| 004             |     | 212009-2  | Needle bearing 509              | 1   |     |         |           |        |
| 005             |     | 1412D2-8  | Magazine cover complete         | 1   |     |         |           |        |
| 006             |     | 232924-4  | Compression spring 11           | 1   |     |         | E3393     |        |
| 006-1           |     | 232A45-8  | Compression spring 17           | 1   | S   | E3393   |           |        |
| 007             |     | 312H72-4  | Reel bearing                    | 1   |     |         |           |        |
| 008             |     | 941051-3  | Flat washer 4                   | 1   |     |         | E3393     |        |
| 008-1           |     | 941001-8  | Flat washer 3                   | 1   | S   | E3393   |           |        |
| 009             |     | 266007-8  | Binding head tapping screw 3X10 | 1   |     |         |           |        |
| 010             |     | 233388-5  | Compression spring 5            | 1   |     |         |           |        |
| 011             |     | 347D47-0  | Guide plate                     | 1   |     |         |           |        |
| 012             |     | 266007-8  | Binding head tapping screw 3X10 | 1   |     |         |           |        |
| 013             |     | 4131T9-3  | Magazine cover lock             | 1   |     |         |           |        |
| 014             |     | 262054-7  | Urethane ring 3                 | 1   |     |         |           |        |
| 015             |     | 256A93-3  | Grooved pin 4A                  | 1   |     |         |           |        |
| 016             |     | 266404-8  | Binding head tapping screw 3X14 | 2   |     |         |           |        |
| 017             |     | 312H73-2  | Reel base                       | 1   |     |         |           |        |
| 018             |     | 1410Y0-7  | Magnet holder D complete        | 1   |     |         |           |        |
| 019             |     | 232921-0  | Compression spring 4C           | 1   |     |         |           |        |
| 020             |     | 4131U3-2  | Plate cover                     | 1   |     |         |           |        |
| 021             |     | 266404-8  | Binding head tapping screw 3X14 | 2   |     |         |           |        |
| 022             |     | 268136-3  | Pin 4                           | 1   |     |         |           |        |
| 023             |     | 232925-2  | Torsion spring 4A               | 1   |     |         |           |        |
| 024             |     | 347D33-1  | Side plate                      | 1   |     |         |           |        |
| 025             |     | 911008-8  | Pan head screw M3X8 WR          | 2   |     |         |           |        |
| 026             |     | 1831M0-3  | Housing set                     | 1   |     |         |           |        |
|                 | C10 | 263005-3  | Rubber pin 6                    | 2   |     |         |           |        |
|                 | C20 | 252126-6  | Hex. lock nut M4-7              | 2   |     |         |           |        |
|                 | C30 | 8091F3-7  | Caution label A                 | 1   |     |         |           |        |
|                 | C40 | 8091F5-3  | Caution label B                 | 1   |     |         |           |        |
|                 | C50 | 8091F1-1  | Indication label                | 1   |     |         |           |        |
|                 | D10 |           | INC. 61                         |   |     |         |           |        |
| 027             |     | 256A89-4  | Shoulder pin 4C                 | 1   |     |         |           |        |
| 028             |     | 347D30-7  | Stopper base                    | 1   |     |         |           |        |
| 029             |     | 232916-3  | Torsion spring 4B               | 1   |     |         |           |        |
| 030             |     | 313610-7  | Stopper                         | 1   |     |         |           |        |
| 031             |     | 911008-8  | Pan head screw M3X8 WR          | 1   |     |         |           |        |
| 032             |     | 1410X5-0  | Magnet holder C complete        | 1   |     |         |           |        |
| 033             |     | 911008-8  | Pan head screw M3X8 WR          | 1   |     |         |           |        |
| 034             |     | 232922-8  | Compression spring 4B           | 1   |     |         |           |        |
| 035             |     | 1410Y1-5  | Magnet holder A complete        | 1   |     |         |           |        |
| 036             |     | 4131U6-6  | Slide plate cover               | 1   |     |         |           |        |
| 037             |     | 266007-8  | Binding head tapping screw 3X10 | 1   |     |         |           |        |
| 038             |     | 347D32-3  | Slide plate                     | 1   |     |         |           |        |
| 039             |     | 347D38-1  | Slide plate guide               | 1   |     |         |           |        |
| 040             |     | 266007-8  | Binding head tapping screw 3X10 | 1   |     |         |           |        |
| 041             |     | 458219-9  | Trigger lock                    | 1   |     |         |           |        |
| 042             |     | 234037-7  | Compression spring 5            | 1   |     |         |           |        |
| 043             |     | 458220-4  | Trigger                         | 1   |     |         |           |        |
| 044             |     | 632W63-2  | Switch unit                     | 1   |     |         |           |        |
| 045             |     | 1411B8-6  | Controller complete             | 1   |     |         |           |        |
| 046             |     | 632P65-6  | Terminal unit                   | 1   |     |         |           |        |
| 047             |     | 911008-8  | Pan head screw M3X8 WR          | 1   |     |         |           |        |
| 048             |     | 266007-8  | Binding head tapping screw 3X10 | 1   |     |         |           |        |
| 049             |     | 232922-8  | Compression spring 4B           | 1   |     |         |           |        |
| 050             |     | 1410Y1-5  | Magnet holder A complete        | 1   |     |         |           |        |
| 051             |     | 4131U6-6  | Slide plate cover               | 1   |     |         |           |        |
| 052             |     | 347D32-3  | Slide plate                     | 1   |     |         |           |        |
| 053             |     | 266007-8  | Binding head tapping screw 3X10 | 1   |     |         |           |        |
| 054             |     | 347D38-1  | Slide plate guide               | 1   |     |         |           |        |
| 055             |     | 313610-7  | Stopper                         | 1   |     |         |           |        |
| 056             |     | 347D30-7  | Stopper base                    | 1   |     |         |           |        |
| 057             |     | 232916-3  | Torsion spring 4B               | 1   |     |         |           |        |
| B:TR001GM201(L) |     |           |                                 | Interchange<br>O : Yes<br>X : No<br>< : the new part can be substituted for the current.<br>> : the current part can be substituted for the new.<br>S : Interchangeable as a set. |     |         |           |        |

## TR001G / Cordless Rebar Tying Tool

| Item            | Sub | Parts No. | Parts Description               | Qty   | I/C | E/C No. | Close No. | Remark |
|-----------------|-----|-----------|---------------------------------|---|-----|---------|-----------|--------|
| 058             |     | 256A89-4  | Shoulder pin 4C                 | 1   |     |         |           |        |
| 059             |     | 266130-9  | Binding head tapping screw 3X16 | 17  |     |         |           |        |
| 060             |     | 911008-8  | Pan head screw M3X8 WR          | 2   |     |         |           |        |
| 061             |     | 1831M0-3  | Housing set                     | 1   |     |         |           |        |
|                 | C10 | 263005-3  | Rubber pin 6                    | 2   |     |         |           |        |
|                 | C20 | 252126-6  | Hex. lock nut M4-7              | 2   |     |         |           |        |
|                 | C30 | 8091F3-7  | Caution label A                 | 1   |     |         |           |        |
|                 | C40 | 8091F5-3  | Caution label B                 | 1   |     |         |           |        |
|                 | C50 | 8091F1-1  | Indication label                | 1   |     |         |           |        |
|                 | D10 |           | INC. 26                         |   |     |         |           |        |
| 062             |     | 266404-8  | Binding head tapping screw 3X14 | 2   |     |         |           |        |
| 063             |     | 4131U3-2  | Plate cover                     | 1   |     |         |           |        |
| 064             |     | 347D33-1  | Side plate                      | 1   |     |         |           |        |
| 065             |     | 268136-3  | Pin 4                           | 1   |     |         |           |        |
| 066             |     | 232925-2  | Torsion spring 4A               | 1   |     |         |           |        |
| 067             |     | 266007-8  | Binding head tapping screw 3X10 | 2   |     |         |           |        |
| 068             |     | 266490-9  | Pan head tapping screw 2X6      | 3   |     |         |           |        |
| 069             |     | 652069-6  | Flat head screw M3X6            | 3   |     |         |           |        |
| 070             |     | 629D10-8  | Stator                          | 1   |     |         |           |        |
| 071             |     | 619896-4  | Rotor                           | 1   |     |         |           |        |
| 072             |     | 122K70-6  | Twist assembly                  | 1   |     |         |           |        |
| 073             |     | 266490-9  | Pan head tapping screw 2X6      | 3   |     |         |           |        |
| 074             |     | 629D11-6  | Stator                          | 1   |     |         |           |        |
| 075             |     | 652069-6  | Flat head screw M3X6            | 3   |     |         |           |        |
| 076             |     | 619897-2  | Rotor                           | 1   |     |         |           |        |
| 077             |     | 256A08-0  | Pin 5                           | 1   |     |         |           |        |
| 078             |     | 122K54-4  | Curl guide assembly             | 1   |     |         |           |        |
| 079             |     | 1411G5-7  | Cutter complete                 | 1   |     |         |           |        |
| 080             |     | 232923-6  | Compression spring 4D           | 1   |     |         |           |        |
| 081             |     | 347D29-2  | Cutter base                     | 1   |     |         |           |        |
| 082             |     | 313613-1  | Wire bender                     | 1   |     |         |           |        |
| 083             |     | 313606-8  | Cutter guide                    | 1   |     |         |           |        |
| 084             |     | 265634-8  | Hex. socket head bolt M3X8      | 4   |     |         |           |        |
| 085             |     | 313608-4  | Wire guide B                    | 1   |     |         |           |        |
| 086             |     | 347D34-9  | Curl guide C                    | 1   |     |         |           |        |
| 087             |     | 265634-8  | Hex. socket head bolt M3X8      | 1   |     |         |           |        |
| 088             |     | 327E72-3  | Shoulder sleeve 4B              | 1   |     |         |           |        |
| 089             |     | 122K71-4  | Release lever assembly          | 1   |     |         |           |        |
| 090             |     | 253623-5  | Flat washer 9                   | 1   |     |         |           |        |
| 091             |     | 327E71-5  | Shoulder sleeve 4A              | 1   |     |         |           |        |
| 092             |     | 922147-9  | Hex. socket head bolt M4X25     | 1   |     |         |           |        |
| 093             |     | 122K72-2  | Feed gear base assembly         | 1   |     |         |           |        |
| 094             |     | 232919-7  | Compression spring 6            | 1   |     |         |           |        |
| 095             |     | 253632-4  | Flat washer 7                   | 2   |     |         |           |        |
| 096             |     | 137328-4  | Spur gear 21 assembly           | 2   |     |         |           |        |
| 097             |     | 253077-6  | Flat washer 6                   | 2   |     |         |           |        |
| 098             |     | 961011-9  | Stop ring (EXT) E-4             | 2   |     |         |           |        |
| 099             |     | 313603-4  | Wire guide A                    | 1   |     |         |           |        |
| 100             |     | 266080-8  | Hex. socket head bolt M3X12     | 2   |     |         |           |        |
| 101             |     | 4131T8-5  | Gear cover                      | 1   |     |         |           |        |
| 102             |     | 265E18-0  | Hex. socket head bolt M3X17     | 1   |     |         |           |        |
| 103             |     | 8151G5-0  | Name plate TR001G               | 1   |     |         |           |        |
| 104             |     | 8151G9-2  | Serial No. label TR001G         | 1   |     |         |           |        |
| A01             |     | 194381-3  | Oil vessel set                  | 1   |     |         |           |        |
| A02             |     | 266622-8  | Truss head screw M4X12          | 1   |     |         |           |        |
| A03             |     | 347D31-5  | Hook                            | 1   |     |         |           |        |
| A04             |     | 783208-8  | Hex. wrench 2.5                 | 1   |     |         |           |        |
| A05             |     | 821552-6  | Connector plastic case (type 4) | 1   |     |         |           |        |
|                 | C10 | 453974-8  | Latch                           | 4   |     |         |           |        |
| A06             |     | 836433-1  | Inner tray                      | 1   |     |         |           |        |
| A07B            |     | ***DC40RA | DC40RA FAST CHARGER             | 1   |     |         |           |        |
|                 | D10 |           | COMPO-PARTS                     |   |     |         |           |        |
| A09B            |     | 191B26-6  | Battery BL4040 set              | 2   |     |         |           |        |
| F01             |     | 1915N0-0  | Tie wire set                    | 1   |     |         |           |        |
| F02             |     | 1915N1-8  | Galvanized tie wire set         | 1   |     |         |           |        |
| B:TR001GM201(L) |     |           |                                 | Interchange<br>O : Yes<br>X : No<br>< : the new part can be substituted for the current.<br>> : the current part can be substituted for the new.<br>S : Interchangeable as a set. |     |         |           |        |

|           |               |
|-----------|---------------|
| <b>MX</b> | <b>MEXICO</b> |
|-----------|---------------|

## TR001G / Cordless Rebar Tying Tool

[illegible]